

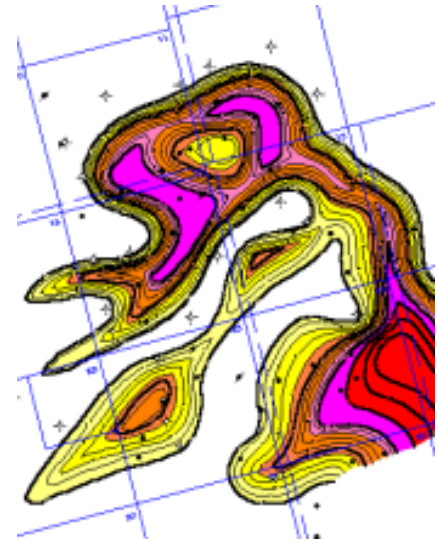
# Acquisition CARM

(Computer Aided Reservoir Management)

## HCPV Map

### Using Public Information...

- Production Data
- Completion/Test Data
- Scout Tickets
- Field Rule Hearings
- Well Log Data
- State Records



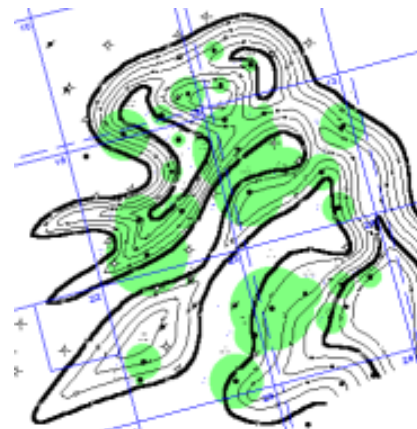
### To evaluate current or future Acquisitions...

- Analog Studies
- Drilling and Reserve Potential
- Database Organization

## Drainage Area Map

### By developing useful tools.

- Net Pay, HCPV, Drainage Maps
- Time Slice Pressure Maps
- Time Slice Production Maps
- Production, Test, Log Databases
- Engineering Analysis Compilation (Nodal, Decline, Material Balance, Volumetrics, Reserves, EUR)



## Log Analysis Database

Well Log Analysis Database															
Log Analysis Results															
Long WellID	Field Name	Top (SS)	Analyzed Interval	Gs Snd	Ni Snd	Ni Pay	Por	Rt	Sw	PV	HPV	Kg	Khg	Drainage Area (Ac)	Current Cum (MMSCF)
4229732521	WILCOX 10200	-10081.8	10360-10450	90.0	80.0	10.0	0.22	5.50	0.44	2.20	1.23			1281	13113
4229732521	WILCOX 10900	-10096.2	10090-10900	15.0	10.0	10.0	0.22	8.00	0.36	2.20	1.41			127	1652
4229732626	WILCOX 9900	-8996.2	9666-9776	110.0	60.0	40.0	0.27	4.00	0.42	10.80	6.24			271	14772
4229732667	WILCOX 9900	-8999.0	9910-9990	80.0	65.0	20.0	0.22	7.00	0.39	4.40	2.70			677	15696
4229732993	WILCOX 9900	-8490.0	9705-9820	115.0	45.0	34.0	0.22	3.00	0.25	7.47	5.65	1.74	59.31	199	10063
4229733177	WILCOX 9900	-8465.0	9670-9708	38.0	38.0	30.0	0.20	6.00	0.47	6.00	3.20			109	3139
4229733236	WILCOX 9900	-9561.9	9600-9900	100.0	35.0	24.5	0.21	0.22	5.19	4.10	2.13	52.23		277	10166
4229733269	WILCOX 9900	-9735.0	10000-10100	115.0	70.0	54.0	0.23	0.13	12.24	10.76	3.00	162.40		113	1036*
4229733296	WILCOX 9900	-9360.8	9676-9648	46.0	37.0	29.0	0.28	6.62	0.38	7.99	4.92			105	4618
4229734039	WILCOX F1	-9183.0	9420-9560	140.0	59.0	33.0	0.23	0.36	7.72	4.96	2.97	97.94		92	3876
4229734039	WILCOX F2	-9348.0	9595-9670	85.0	23.5	23.5	0.21	0.44	4.89	2.76	0.70	16.10		4	115
4229734071	WILCOX F1	-9174.0	9440-9566	106.0	102.0	40.0	0.27	3.50	0.45	10.80	5.93			30	1509
4229734077	WILCOX F1	-9170.3	9400-9660	160.0	65.0	41.5	0.22	0.26	8.96	6.71	0.90	37.40		51	2913
4229734081	WILCOX F1	-9188	9442-9662	110.0	38.0	28.0	0.26	2.80	0.57	7.28	3.15			34	917
4229734084	WILCOX F1	-9124.2	9370-9470	100.0	22.5	22.5	0.21	0.37	4.75	3.00	2.54	57.24		45	1132
4229734086	WILCOX F1	-9162.9	9424-9527	103.0	28.0	26.0	0.26	3.60	0.47	6.76	3.68			81	2211
4229734127	WILCOX F1	-9139.9	9330-9430	100.0	90.0	10.0	0.22	7.00	0.39	2.20	1.35			94	1071

## G-1 Test Database

G-1 Test and Production Evaluation Database															
G-1 Test Information															
Long WellID	Field Name	Test Interval	Test Date	SBOP (psig)	ISVWP (psig)	FTP (psig)	Max Rate (MCFD)	Initial Gas (MMSCF)	Apparent App. Rate (MCFD)	Current Cum (MMSCF)	Top Fm. MD (KB)	Top Fm. KB	Test Fm. KB	Fracture Length (ft)	Fracture Volume (cu ft)
4229732521	WILCOX 10900	10090-10900	09/13/01	8936	8900-9214	2877	1.200	26	1462	10000	275.3	-10006.0			No
4229732626	WILCOX 9900	9670-9708	08/09/02	9637	9594-9726	2704	90	11.400	440	14772	9650	288.0	-8058.0		Yes
4229732667	WILCOX 9900	9910-9990	08/09/02	7940	8790-9136	2882	60	10.000	200	15696	9910	391.0	-9634.0		No
4229732993	WILCOX 9900	9705-9820	11/09/01	7132	5790-5436	2562	65	20.000	600	14140	9550	568.0	-9564.0		No
4229733177	WILCOX 9900	9670-9708	07/22/02	7953	6291-5595	1915	20	6.000	116	31070	282.0	-8568.0		Yes	
4229733236	WILCOX F1	9600-9900	09/09/01	6371	4984-4256	2790	70	4.000	130	10410	9650	236.0	-9210.0		No
4229733269	WILCOX 9900	9676-9648	04/19/02	7640	5851-6338	4331	20	5.000	150	7058	9036	236.0	-9640.0		No
4229733296	WILCOX 9900	9676-9648	09/28/02	6800	5997-6308	3005	70	2.500	95	10000	9708	214.5	-9630.0		No
4229734039	WILCOX 9900	9420-9560	11/09/01	6937	6090-6139	3662	26	6.500	145	10000	9670	236.0	-9637.0		Yes
4229734077	WILCOX 9900	9400-9660	07/19/02	6728	5300-5015	2382	40	0.300	24	3330	9670	236.0	-9485.0		No
4229734081	WILCOX F1	9442-9662	09/17/04	4930	3540-2520	3910	26	3.000	111	440	3090	240.0	-8439.0		Yes
4229734084	WILCOX F1	9370-9470	11/16/04	4706	3260-1136	3260	440	18.000	3700	19140	9370	240.0	-8815.0		Yes
4229734086	WILCOX 9900	10000-10100	09/09/01	6315	3285-1577	7445	91	5.000	324	10000	10000	285.0	-9705.0		Yes
4229734096	WILCOX 9900	9676-9648	09/09/01	9635	4397-1515	2067	40	1.300	130	540	9177	215.0	-9003.0		No
4229734098	WILCOX 9900	9676-9648	09/19/02	6800	6300-6214	3977	40	1.200	26	971	10000	282.0	-9647.0		Yes
4229734099	WILCOX F1	9424-9646	02/20/04	3632	3700-1400	770	46	0.600	17	137	9670	280.0	-9514.0		No
4229734109	WILCOX F1	9424-9646	09/26/02	6358	5120-3307	2804	40	2.100	68	3826	9620	232.0	-8530.0		Yes
4229734139	WILCOX F2	9600-9900	09/19/02	6643	4484-2726	1385	40	0.400	13	115	9650	232.0	-9648.0		Yes
4229734171	WILCOX F1	9440-9660	11/29/01	6176	4510-2515	3025	20	3.000	130	1350	9620	236.0	-8740.0		Yes
4229734177	WILCOX F1	9400-9660	11/16/02	4932	3780-2326	2705	40	2.000	62	2310	9600	232.0	-8770.0		No
4229734201	WILCOX F1	9444-9676	11/05/01	5813	3401-2015	4075	20	2.800	81	817	9640	235.0	-8667.0		Yes
4229734204	WILCOX F1	9370-9470	09/19/04	4916	2861-2016	5284	20	7.000	144	1130	9270	245.0	-8434.0		Yes
4229734206	WILCOX F1	9400-9660	03/09/04	5050	4000-1000	3000	30	0.700	10	2311	9648	275.0	-8520.0		Yes
4229734114	WILCOX F1	9440-9660	04/19/04	5793	4590-2395	4397	54	4.000	135	1000	9540	136.0	-8470.0		Yes
4229734127	WILCOX F1	9330-9430	09/01/04	3641	2800-1770	4794	20	11.000	110	1070	9030	130.0	-8330.0		No