



RESTECH

Reservoir Evaluation Services

ADCAP®

(Advanced Capillary Pressure Analysis)

Minimum Data Required

- Open Hole Logs
- Hydrocarbon Type

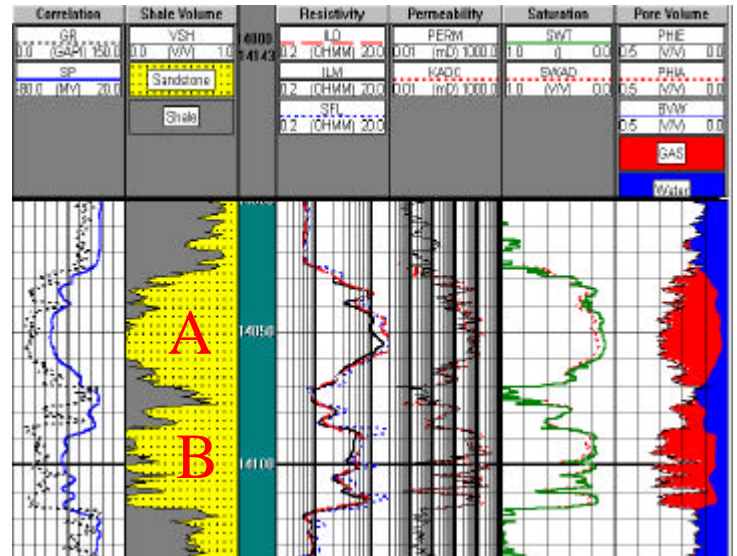
Additional Data (if available)

- Routine Core Analysis
- Capillary Pressure Data
- RFT / MDT Data
- Flow Test / PBU Results

Purpose

- Determine Free Water Level
 - * Downdip Reservoir Limits
 - * Quantify Reserves Below LKO / LKG
 - * Define Delineation Plan

TWO ZONES IN HYDRAULIC GAS PHASE CONTINUITY

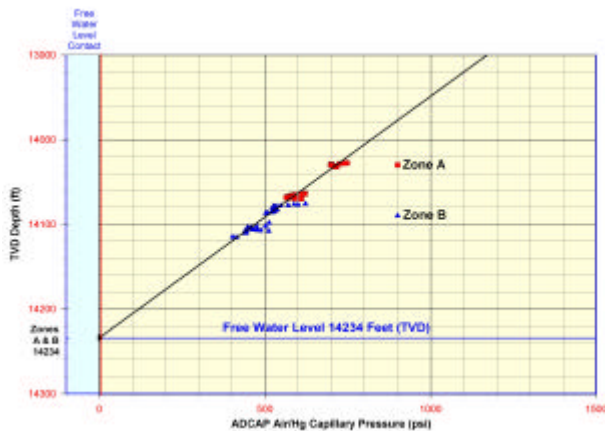


FWL = ?, Two zones connected?
 FWL_A = 14219'
 FWL_B = 14240'

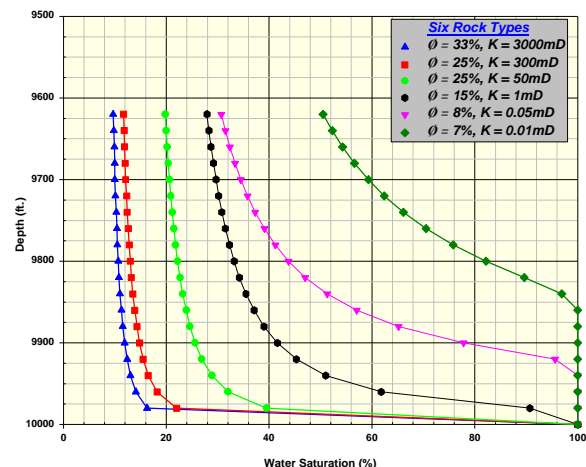
LKG = 20 BCF
 FWL_{A+B} = 14234' (+/- 18')
 Gross column = 200'
 Booked reserves = 100 BCF

ADCAP® Analysis

Capillary Pressure vs. TVD Depth



Example Capillary Pressure Curves For Varying Rock Types Assuming FWL = 10,000ft.



For More Information About ADCAP® Contact
 ResTech @ (281) 537-8300 www.restechinc.com