



RESTECH

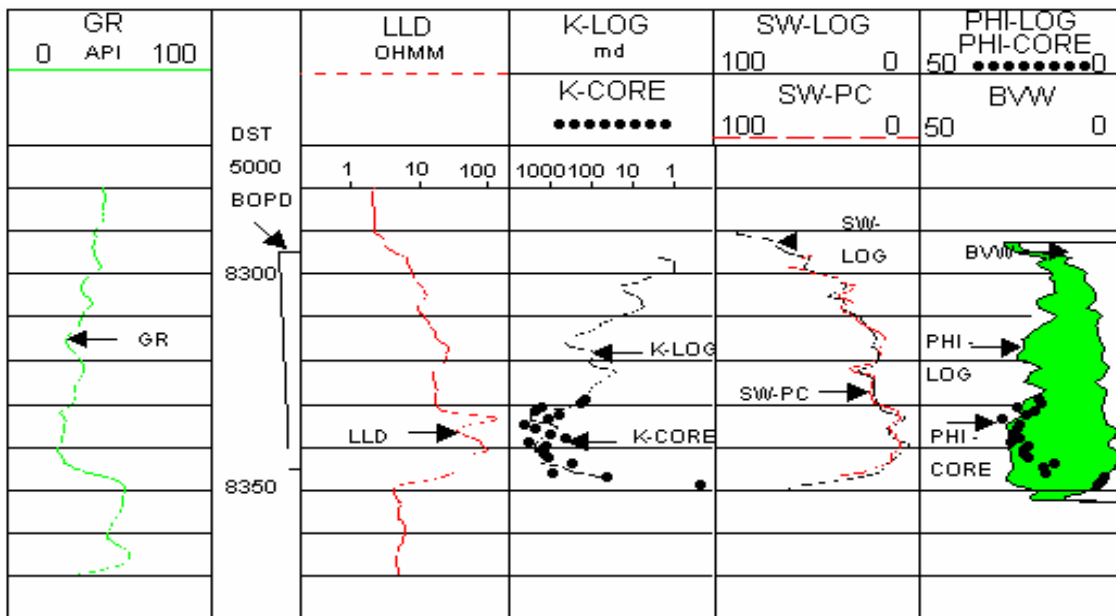
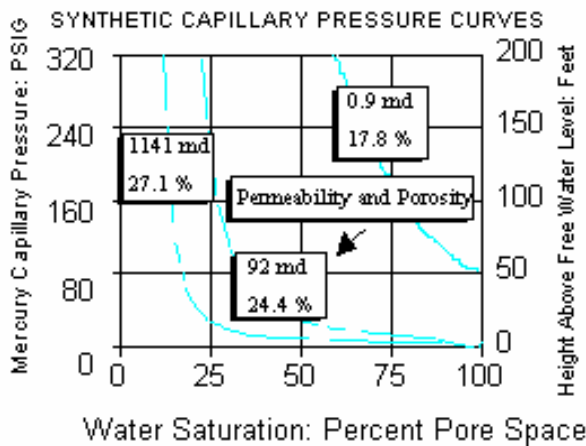
Reservoir Evaluation Services

With no other well data,
how can we find this
reservoir's water level?

This offshore Cote D'Ivoire* well tested 5000 barrels oil per day (BOPD), but reservoir areal extent is unknown.

ResTech predicted a water level 150 feet below sand base from regression analysis employing synthetic capillary pressure curves together with log and core data in the sand. The near perfect match between the log calculated water saturation (SW) and the SW from capillary pressure (below) for a corresponding 150 foot oil column, indicates an oil water contact at a measured depth of 8500 feet.

A 3-D seismic map shows a spill point at the same elevation. Field development proceeding.



* Ivory Coast, offshore Africa

For More Information About Predicting Water Levels Contact
ResTech @ (281) 537-8300