

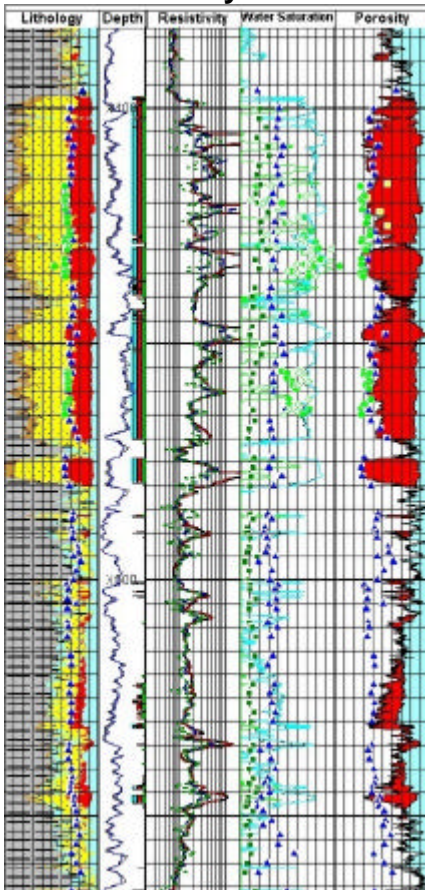


RESTECH

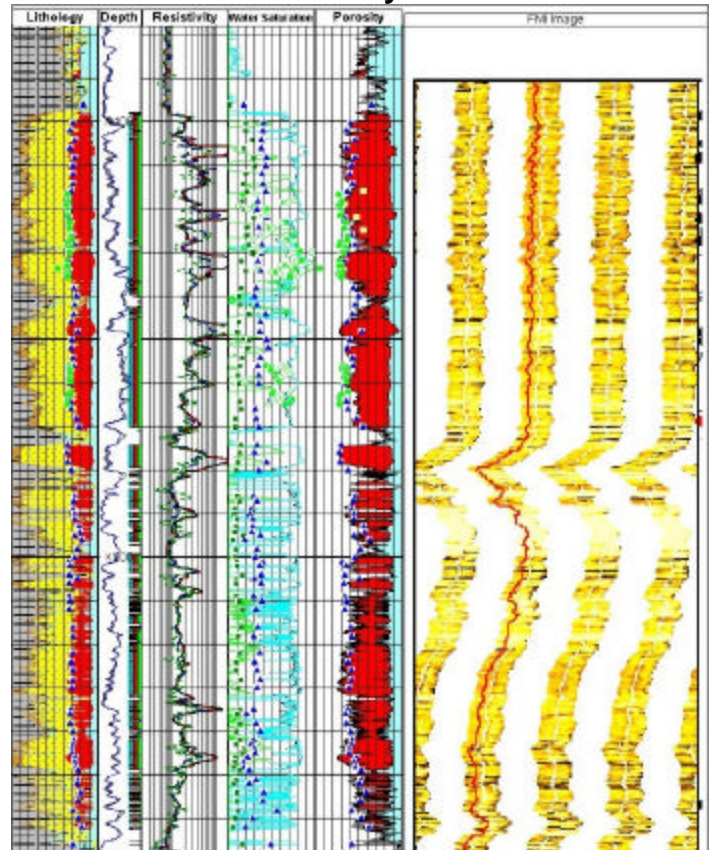
Reservoir Evaluation Services

INTEGRATED NET PAY ENHANCEMENT

Net Pay 83 feet

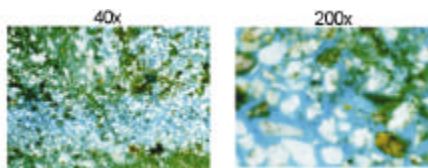


Net Pay 138 feet



The above log illustrates the separation of core porosity and log porosity across the interval (X485'-X560'). Please note the blue pyramids in the porosity track over the subject interval.

The log above illustrates the impact of integrating image data across the interval in question.



Integration of rock data provides a reliable assessment of image tool response and interpretation.

Note: porosity/clean sand character

Integrates Core, Image, and Log Analysis

- ◆ Enhanced Shale Volume Calculations
- ◆ Improved Porosity and Permeability Determination
- ◆ More Accurate Net Pay
- ◆ More Accurate Volumetrics
- ◆ Increased Reserve Allocation

For More Information About Integrated Net Pay Enhancement Services Contact
ResTech @ (281) 537-8300 or DKD @ (281) 507-2918